

PrintSuperVision by OKI®

Web-based Network Printer Management

Saves Resources, Increases Productivity – And It's Free



Anticipate replacement purchases PrintSuperVision's color coded supplies usage information with "days remaining" allows for proactive printer maintenance and less end user down time.

OKI PrintSuperVision Highlights:

- Proactively manage OKI® printers and non-OKI, SNMP-based models from most manufacturers
- Simple, easy-to-use interface – manage printers from anywhere on the Web using IP or IPX
- Data available via most popular Web browsers, and accessible from multiple platforms – Windows®, Mac®, Unix®, Linux and others
- View printer status at a glance
- "Clone" settings from one OKI to many OKI printers¹
- Group printers by geography, responsibility, type or any individual preference
- View groups of printers by list or placement on floor plan, site map or any bitmap layout
- Generate reports on-screen or in XML, Excel®, and XTML formats; export data in Text and CSV formats
- Create and monitor printing costs, maintenance logs
- Manage consumables with virtual "stock cupboard" feature and predictive information
- Control guest-, user- and administrative-level accessibility
- Configure printer-status e-mail alerts to appropriate individuals for action-taking
- Quickly determine action needed via color-coded icons

¹ OKI printers only.

Real-time monitoring and reporting of networked printers, with remote management through popular Web browsers

Control of your networked printer resources has never been easier.

OKI® offers a free utility that gives your printer administrators management control over every configured OKI printer—and most SNMP-based printers—on your network. It's called PrintSuperVision.

Designed with the busy IT, network or LAN/WAN manager in mind, PrintSuperVision lets you tell at a glance where a printer—or group of printers—is located... predict toner levels and image drum life¹ for accurate planning... and see how many pages were printed that day or as far back as when a machine was added to the network.

Flexibility is key. PrintSuperVision is a snap to set up and use. Organize printer resources by individual or workgroup needs, and quickly assign administrative, regular user and guest access.

If many of your OKI printers are the same model, you can create a default printer description for just one and "clone" all the rest in a few simple, time-saving steps.

You can even scan in floor plans, site maps or geographical maps, then pinpoint the

location of any printer on PrintSuperVision's "map" views—with interactive icons that display printer status conditions.

Decrease downtime—electronically.

The information PrintSuperVision gathers is available in real time from any computer that can access your network—anywhere in the world, using popular Web browsers on virtually any platform, including Windows®, Mac®, Unix® and Linux.

PrintSuperVision lets you delegate routine printer management—such as replacing supplies—through e-mail alerts that are automatically forwarded to a help desk or local action-takers.

Added convenience and time-savings.

Data from PrintSuperVision can be exported as text, CSV, HTML, XML and Microsoft® Excel® files—enabling you to easily and quickly format reports, and produce striking graphs and charts.

When it comes to saving time, costs and resources, PrintSuperVision by OKI is an effective addition to your demanding environment.



OKI®

Designed to Perform in the Most Demanding Environments.

PROVEN.

PrintSuperVision by OKI®

Web-based Network Printer Management

Benefits of PrintSuperVision:

Saves Time and Costs

- Manage printer usage/cost
- Minimize user intervention (e.g. proactive reporting of supplies usage)
- Minimize printer downtime (e.g. fast alert notification, including routine maintenance)
- Maximize resources (e.g. man-hours and supplies)

Flexibility

- Customizable access, reports, alerts, views
- Administrator, regular user, and guest access
- Reports supply usage, pages printed, printer properties
- XML database architecture
- Data available in text, CSV, HTML, XML and Microsoft® Excel®

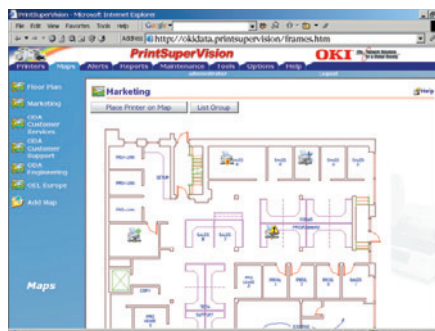
Ease of Use

- Web browser access from any client computer
- Easily identifiable status icons
- Faster, consistent set-up with configuration "cloning"
- Easy to locate printers via "map" view—floor plans, site plans, geographical maps
- Links to printer manufacturer sites

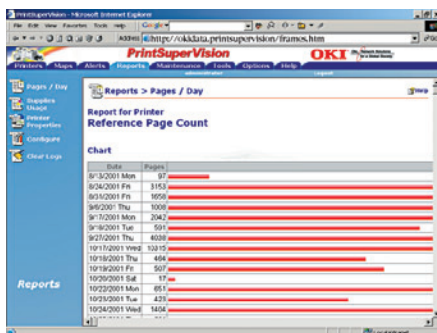
PrintSuperVision is a robust, feature rich utility:



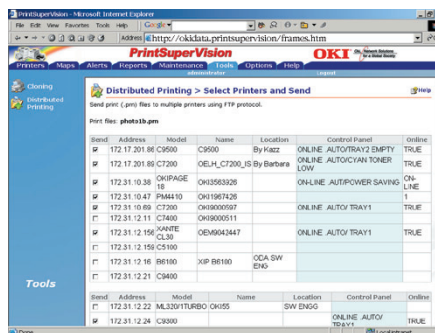
Fast, consistent set-up When you have more than one of the same printer model, PrintSuperVision lets you easily "clone" the default printer description from one into the set-up of all the others—saving installation time and effort.



Keep your printers' locations in plain sight To make finding and identifying printers easy, OKI® PrintSuperVision allows you to import floor plans, site maps or geographic maps, and place interactive icons where your printers are actually located.



Keep track of user activity With PrintSuperVision's page count reporting feature, the usage of each printer can be graphically displayed—day by day or via historical data back to when the printer was added to the network (or PrintSuperVision was installed).



Manage your time Easily send multiple print files over your private network to various groups of printers and receive delivery status from remote destinations.

Specifications

Program Description

- Web-based network printer management
- Free downloadable utility, available exclusively from OKI
- Support for OKI-brand printers¹ and SNMP-based non-OKI printers on enterprise network

Hardware Requirements

- **Free Disk Space:** 20 MB
- **Memory:** 64 MB RAM (128 MB RAM recommended)
- **Processor:** Pentium® II 400 MHz minimum, 64 MB RAM or better, with CD capability

System Requirements

- **Server Software:** Windows® 2000 or XP Professional Server; Windows NT® 4.0 Workstation; Windows 98 with Microsoft® Personal Web Server™; Microsoft IIS
- **Client Browser Software:** Most popular Web browsers supported: Microsoft Internet Explorer® 4.01 or above; Netscape® Navigator® 4.0 or above; Opera® v5.12 or above.

Printer Management

- Supports all current OKI network printers
- Support for most SNMP-based non-OKI network printers
- At-a-Glance Status
- Remote Management via popular Web browsers; seamless integration with printers' internal Web servers
- Default Printer Description Cloning
- Map View from bitmap graphics files input
- Search function enables discovery by multiple fields (e.g. Address, Model, Name, Location)
- Customizable Alerts with E-mail Alert functionality
- "Stock Cupboard" function for tracking supplies inventory
- Comprehensive Help Module including online links

Reporting Features

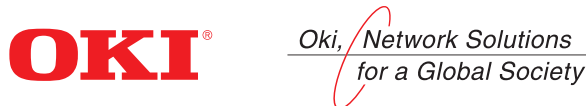
- Supplies Usage (Toner, Drum, Belt, Fuser) with "Predict Empty" function for proactive management
- Pages Printed Per Day
- Printer Properties
- Data available in Text, CSV, HTML, XML and Microsoft® Excel®

For more information on OKI Software products, Digital Color Printers, Digital Mono Printers, Impact Printers, and replacement supplies, including OKIcare® Extended Service Programs: **1-800-OKI-DATA** (800-654-3282).

¹ OKI printers must be registered at my.okidata.com to qualify for PrintSuperVision utility.

Specifications are subject to change without notice.

© 2003 Oki Data Americas, Inc. OKI, OKIcare Reg. T.M., Oki Electric Industry Co., Ltd. Microsoft, Windows, Windows NT, Excel, Internet Explorer Reg. T.M., Microsoft Corp. Netscape, Navigator Reg. T.M., Netscape Inc. Opera Reg. T.M., Opera Software ASA. Mac Reg. T.M., Apple Computer, Inc. Unix Reg. T.M., SCO. Pentium, Personal Web Server Reg. T.M., Intel Corp.



To contact Oki Data Americas, Inc.

In USA: 2000 Bishops Gate Blvd.
Mount Laurel, NJ 08054-4620
Tel: 800.OKI.DATA (800.654.3282)
Fax: 856.222.5320

In Canada: 2735 Matheson Blvd. East
Mississauga, Ontario L4W 4M8
Tel: 905.238.4250
Fax: 905.238.4421

In Latin America and Mexico:

2000 Bishops Gate Blvd.
Mount Laurel, NJ 08054-4620
Tel: 856.231.0002
Fax: 856.222.5071