



### Fax, Print, Copy and Scan with One Fast 8 ppm Machine.

Looking for an all-in-one desktop solution? Or how about a perfect solution for that work you're always taking home from the office? Or perhaps you need a single replacement for all those space-consuming devices in your department? Then the OKIOFFICE<sup>®</sup> 87 is ideal for you.

The OKIOFFICE 87 Digital LED multifunction facsimile combines four of the most critical office functions into one fully-integrated, compact, easy-to-use and fast machine.

#### A complete range of office functions—right on your desktop.

Although the OKIOFFICE 87 takes up precious little desk space, it's a feature-rich product that provides you with all your business document printing and communication needs:

- **Faxing**—transmit and receive documents quickly—at the touch of a button—with a 33.6 Kbps modem. Work more efficiently with such features as broadcasting, instant dial, 1-touch speed dialing, and a 160-page<sup>1</sup> fax memory.
- **Printing**—the 600-dpi, toner-based Digital LED printer lets you print professional-quality documents and crisp, clear graphics at a fast 8 pages per minute!
- **Copying**—make up to 50 copies from a single original at a speedy 8 cpm, with 25%–200% reduce/enlarge, 2-up and 4-up copying, and sharp 300-dpi output.
- **Scanning**—scan documents in only 6 seconds per page at a high-quality 300 dpi resolution.

#### Versatile and flexible

The OKIOFFICE 87 is compatible with most popular PC-based operating systems.



It works with your existing software applications, offering support for Windows<sup>®</sup> 2000, 98/95, NT<sup>®</sup> 4.0, and Millennium.

For a variety of output options, there's the 100-sheet paper tray, 20-sheet automatic document feeder, and manual feed for envelopes, labels, overhead transparencies and custom paper sizes. And the straight-through paper path of the OKIOFFICE 87 ensures that all your documents come out clean—no warping and no wrinkling.

#### Small size, big benefits

With all its functionality, the OKIOFFICE 87 is surprisingly small—about the size of a standard desktop printer or fax. Especially if desk space is at a premium, the OKIOFFICE 87 eliminates the need for multiple devices so your workspace is less cluttered.

The OKIOFFICE 87 multifunction facsimile: a convenient, powerful, all-in-one device that saves you time, space and money.

<sup>1</sup>Based on ITU-T Test Chart #1.

The high-performance multifunction solution for all of your business communication needs.



**OKIOFFICE® 87**  
MULTIFUNCTION FACSIMILE

**Printing**

**Print Speed:** 8 ppm  
**Print Resolution:** True 600-dpi output in Windows®  
**Method:** LED, toner-based

**Faxing**

**Access:** Walk-up or via PC  
**Modem Speed:** 33.6 Kbps  
**Transmission Speed:** 3 seconds per page<sup>1</sup>  
**Scan Resolution/Width:** 300 dpi/8.5" (21.5 cm)  
**One-Touch/Auto-Dials:** 10/100  
**Group Dials:** 5 groups, 110 numbers

**Copying**

**Copy Speed:** 8 copies per minute  
**Access:** Walk-up or via PC  
**Number of Copies:** 50-page multi-copy capability  
**Automatic Document Feeder:** Up to 20 originals  
**Resolution:** 300 dpi copying  
**Reduce/Enlarge:** 25%–200%; 2-up and 4-up copying

**Scanning**

**Resolution:** Up to 300 dpi  
**Scan Speed:** Up to 6 seconds per page  
**Gray Scale:** 64 levels

**PC Software**

**Standard:** Unimessage™ Pro xLite  
**Features:** Integrated user "desktop" interface; Optical Character Recognition (OCR); File management: Custom capabilities for document creation, management and delivery  
**Document Management:** Send faxes from PC; Send paper documents by fax or e-mail; input existing phonebook data from any database file; Receive e-mails and faxes into PC (with optional Unimessage Pro or Pro LAN versions)

**Compatibility**

**Print/Fax:** Windows® 2000; Windows 98/95; NT® 4.0 and Millennium  
**Scan:** TWAIN compatible

**Interface**

**Standard:** IEEE 1284 bi-directional parallel (cable included)

**Paper Handling**

**Universal Tray:** (100 sheets max.); Letter, Legal, A4  
**Manual Feeder:** Letter, Legal, A4, Envelopes, Labels, Overhead transparencies, Custom sizes

**Memory**

**Fax Standard:** 2 MB (up to 160 fax send/receive pages<sup>2</sup>)

**Environmental**

**Size (W x D x H):** 12.3"x15.3"x7.5" (31.6 cm x 38.3 cm x 19.0 cm)  
**Weight:** 16 lb., 12 oz. (7.6 kg) with image drum  
**Power Modes:** Ready and energy-saving Standby

**Warranty**

**Parts/Labor:** 1-Yr. limited warranty with Overnight Exchange<sup>1</sup>  
**LED Printhead:** 5-Yr. limited warranty

**Ordering Information (Part Number)**

**Printer:**  
OKIOFFICE 87, 120V (Eng) 62211001  
OKIOFFICE 87, 120V (Eng/Fr) 62211002

**Supplies:**  
Toner Cartridge Kit 52111701  
Image Drum Kit 40709901

**Options:**  
Handset Kit 70031801  
Unimessage Pro Upgrade Kit 70039201  
Unimessage Pro LAN Upgrade Kit 70039301

<sup>1</sup>Based on ITU-T Test Chart #1. <sup>2</sup>Available in U.S.A. and Canada only.  
All specifications subject to change without notice.

©2001 Oki Data Americas, Inc. OKI Reg. T.M., M.D., OKIOFFICE Reg. T.M., People to People Technology and design T.M., Oki Electric Industry Co., Ltd. 7-Day/24-Hour logo, One Year Overnight Exchange logo T.M., Oki Data Americas, Inc. Windows, Windows NT, Reg. T.M., Microsoft Corp. Unimessage, T.M., Wordcraft International Corp. Energy Star Reg. T.M., U.S. EPA.

Printed in the U.S.

MS11259/0601

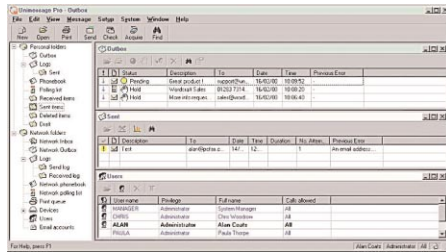
**Unimessage™ Pro xLite software lets you take control of all your communications.**

Unimessage™ Pro xLite is the integrated software included with your OKIOFFICE 87. It allows you to fax, PC fax, copy, print, and scan all from one system.

It's a fully integrated desktop messaging application. With Unimessage Pro xLite you have the flexibility to:

- Action your messages and files as they arrive in your PC in-box
- View and edit different types of image files without opening other applications

- Broadcast to multi-recipient distribution lists
- Time-delay transmissions and broadcasts to take advantage of cheaper phone rates
- Scan documents and perform optical character recognition (OCR)

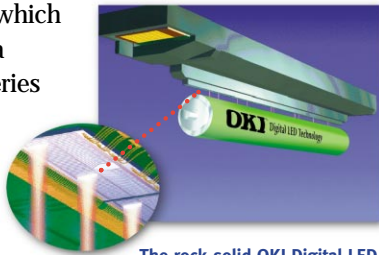


**Unimessage Pro xLite software brings together fax, printing, copying and scanning to provide fully integrated messaging right on your desktop.**

**Technology-driven reliability. Industry-leading support.**

Driving the high-quality output of the OKIOFFICE™ 87 is OKI Digital LED printing technology.

Unlike lasers, which print through a complicated series of rotating mirrors and moving parts, OKI's printing process uses flashing pinpoint beams of light that go straight to the photo-receptive image drum.



The rock-solid OKI Digital LED printhead utilizes a stationary array of pulsing light-emitting diodes (detail) to create high-resolution text and graphics.

MFP machines with a 1-year limited warranty with Overnight Exchange<sup>1</sup>, and the industry's only 5-year printhead warranty.

If you need OKIcare® technical assistance, simply call 1-800-OKI-DATA (800-654-3282) and speak with a live service representative, 7 days a week, 24 hours a day, 365 days a year.

For more information on this or any other OKI Fax/MFP product, or for the location of an OKI dealer near you, please visit our web site at [www.okidata.com](http://www.okidata.com).

Because this technology is so reliable, OKI backs its Digital LED

**To Contact Oki Data Americas, Inc.**

**In USA:** 2000 Bishops Gate Blvd.  
Mount Laurel, NJ 08054-4620  
Tel: 800.OKI-DATA (800.654.3282)  
Fax: 856.222.5320

**In Canada:** 2735 Matheson Blvd. East  
Mississauga, Ontario L4W 4M8  
Tel: 905.238.4250  
Fax: 905.238.4421

**In Latin America and Mexico:**  
2000 Bishops Gate Blvd.  
Mount Laurel, NJ 08054-4620  
Tel: 856.231.0002  
Fax: 856.222.5071  
**Web Site:** [www.okidata.com](http://www.okidata.com)

